

District Evidence Statement Analysis



CONFIDENTIAL - DO NOT DISTRIBUTE

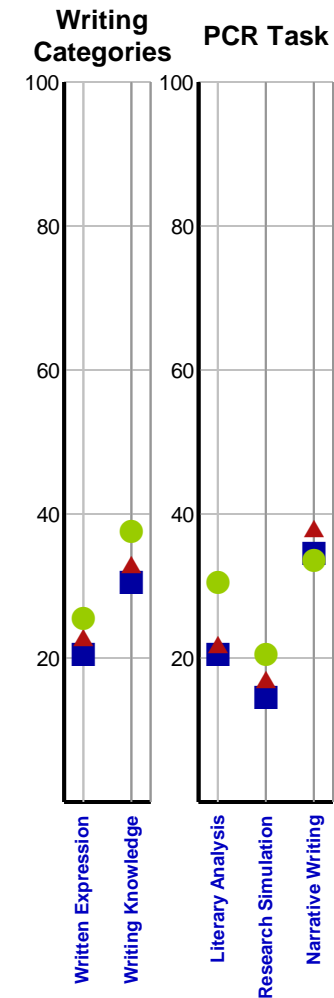
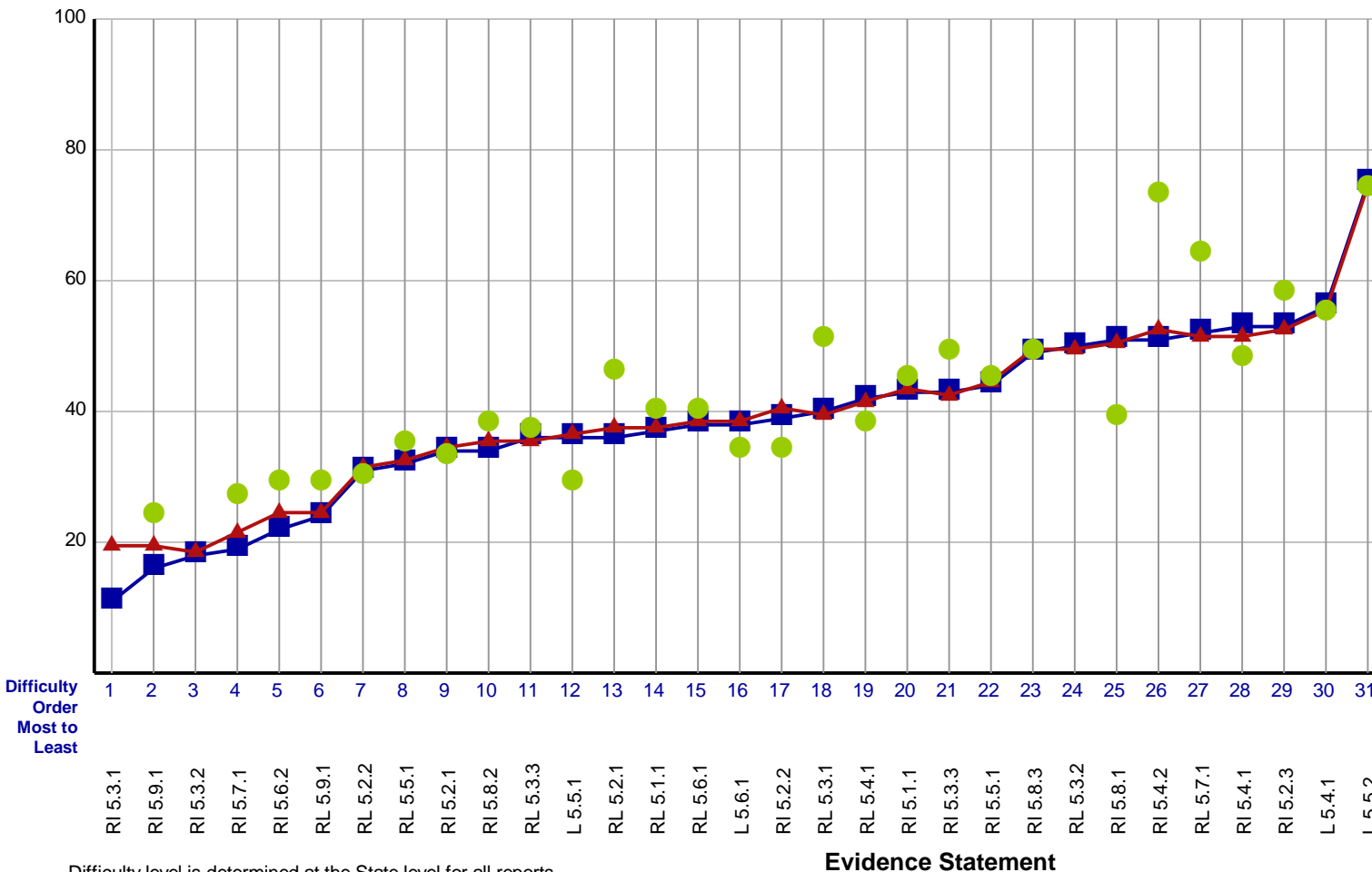
INTERNATIONAL CHARTER SCHOOL
RHODE ISLAND

ENGLISH LANGUAGE ARTS / LITERACY Grade 5 Assessment, Spring 2017

- ▲ Cross-State
- State
- District

Students with Valid Scores (52)

Purpose: This report presents the average percent correct by Evidence Statement for district, state and Cross-State.



Difficulty level is determined at the State level for all reports
Evidence Statements not tested in district or school are left blank

This report is NOT for public review. Distribution within your school/district must be in accordance with state and federal privacy laws, and local school board policy.

District Evidence Statement Analysis

Grade 5

CONFIDENTIAL - DO NOT DISTRIBUTE

INTERNATIONAL CHARTER SCHOOL

RHODE ISLAND

This report shows the operational Evidence Statements for the given grade and subject sorted by difficulty

ENGLISH LANGUAGE ARTS / LITERACY

Grade 5 Assessment, Spring 2017

Difficulty Order Most to Least	Evidence Statement	Common Core State Standard(s)	Domain	District Student Count
1	RI 5.3.1	RI.5.3	Reading: Informational Text	0
2	RI 5.9.1	RI.5.9	Reading: Informational Text	52
3	RI 5.3.2	RI.5.3	Reading: Informational Text	0
4	RI 5.7.1	RI.5.7	Reading: Informational Text	33
5	RI 5.6.2	RI.5.6	Reading: Informational Text	36
6	RL 5.9.1	RL.5.9	Reading: Literature	36
7	RL 5.2.2	RL.5.2	Reading: Literature	52
8	RL 5.5.1	RL.5.5	Reading: Literature	52
9	RI 5.2.1	RI.5.2	Reading: Informational Text	52
10	RI 5.8.2	RI.5.8	Reading: Informational Text	52
11	RL 5.3.3	RL.5.3	Reading: Literature	52
12	L 5.5.1	L.5.5	Language	52
13	RL 5.2.1	RL.5.2	Reading: Literature	52
14	RL 5.1.1	RL.5.1	Reading: Literature	52
15	RL 5.6.1	RL.5.6	Reading: Literature	52
16	L 5.6.1	L.5.6	Language	19
17	RI 5.2.2	RI.5.2	Reading: Informational Text	36
18	RL 5.3.1	RL.5.3	Reading: Literature	35
19	RL 5.4.1	RL.5.4	Reading: Literature	52
20	RI 5.1.1	RI.5.1	Reading: Informational Text	52
21	RI 5.3.3	RI.5.3	Reading: Informational Text	52
22	RI 5.5.1	RI.5.5	Reading: Informational Text	33
23	RI 5.8.3	RI.5.8	Reading: Informational Text	52
24	RL 5.3.2	RL.5.3	Reading: Literature	0
25	RI 5.8.1	RI.5.8	Reading: Informational Text	19
26	RI 5.4.2	RI.5.4	Reading: Informational Text	17
27	RL 5.7.1	RL.5.7	Reading: Literature	17
28	RI 5.4.1	RI.5.4	Reading: Informational Text	52
29	RI 5.2.3	RI.5.2	Reading: Informational Text	35
30	L 5.4.1	L.5.4	Language	52
31	L 5.5.2	L.5.5	Language	35

Evidence Statements: <http://www.parc-assessment.org/assessments/test-design/ela-literacy/test-specifications-documents>

Common Core State Standards: <http://www.corestandards.org/>

This report is NOT for public review. Distribution within your school/district must be in accordance with state and federal privacy laws, and local school board policy.